

Copyright © 2005

All rights reserved. No part of this publication may be reproduced, transmitted, transcribed, stored in a retrieval system, or translated into any language, or computer language, in any form, or by any means, electronic, mechanical, magnetic, optical, chemical, or other, without the prior written permission of the manufacturer.

The manufacture reserves the right to revise this publication and to make changes from time to time in the contents hereof without obligation to notify any person of such revision or changes.

The manufacturer makes no representations or warranties, either expressed or implied, with respect to the contents hereof and specifically disclaims any warranties as to merchantability or fitness for any particular purpose. Any of the manufacturer's software described in this manual is sold or licensed "as is". Should the programs prove defective following their purchase, the buyer (and not the manufacturer, its distributor, or its dealer), assumes the entire cost of all necessary servicing, repair and any incidental or consequential damages resulting from any defect in the software.

Trademark Acknowledgments

IBM, PC are registered trademarks of International Business Machines Corp.

Microsoft, Windows CE, Pocket PC, and Windows Mobile are registered trademarks of Microsoft Corp.

Intel, Xscale are the registered trademarks of Intel Corp.

All product and company names are trademarks or registered trademarks of their respective holders.

EMC and Safety Notice

Federal Communications Commission Radio Frequency Interference Statement

This equipment generates, uses, and can radiate radio frequency energy and if not installed and used in accordance with the instructions, may cause interference to radio communications. This equipment has been tested and found to comply with Class B digital devices, pursuant to Part 15 of the FCC rules which are designed to provide reasonable protection against such interference when operated in a commercial or residential environment.

Countermeasures if interference occurs

You are encouraged to do the following if interference occurs while you are operating the device:

1. Turn OFF the unit and unplug the AC adapter from the outlet to see if the interference disappears.
2. Connect the AC adapter to the outlet in another room and check if the interference still exists.
3. Use an outlet that is far away from the interfered appliance.
4. Re-orient your computer in respect to the interfered appliance to see if there is improvement.

If all of these failed, please call your dealer for help.

CE

This equipment complies with the requirements set out in the Council Directive on the Approximation of the laws of the Member States relating to Electromagnetic Compatibility (89/336/EEC). For the evaluation regarding the electromagnetic compatibility, the following standards were applied:

EN55022 +A2:2003 Class B EMI Conduction and Radiation

EN61000-3-2 Harmonics

EN61000-3-3 +A1:2001 Flicker (Voltage fluctuation)

EN55024 EMS

EN61000-4-2 +A2:2001 ESD

EN61000-4-3 +A1:2002 RS

EN61000-4-4 +A2:2001 EFT

EN61000-4-5 +A1:2001 Surge

EN61000-4-6 +A1:2001 CS

EN61000-4-8 Power-Frequency Magnetic Field

EN61000-4-11 +A1:2001 Voltage Dips and Voltage Interruptions

LVD EN60950 :2001

ETSI EN301 489-01 V1.4.1 EMC Standards for Radio Equipment

ETSI EN 301 489-17 1.2.1 EMC Standards for 2.4GHz Wideband Transmission Systems)

ETSI EN 300 328-2 V1.2.1 EMC Standards for Using Spread Spectrum Modulation Techniques

UL, TÜV

AC Adapter (EN60950 LVD is included in TÜV)

E-Mark

Registered e13

Material Safety and Recycling Notice

All materials used in the construction of this unit are recyclable or environmentally friendly. No mercury, cadmium, CFC or related materials were used in the manufacturing process or inside the product.

Please recycle the packing materials, and at the end of the unit's life, all other materials in accordance with the local regulations.

Please refer “**Materials and Recycling**” for the contents of the materials.

CONTENTS

GETTING STARTED	1
UNPACKING	1
QUICK CHECK.....	3
CONTROLS, INDICATORS, AND PORTS	4
OPERATING ENVIRONMENT AND RUGGEDNESS.....	13
COMPONENTS AND FUNCTIONS.....	14
AC ADAPTER.....	14
BATTERY	14
<i>Charge Battery</i>	<i>15</i>
<i>Swap Battery</i>	<i>15</i>
OPTIONAL DEVICES.....	18
CRADLE (OPTIONAL)	18
<i>Front:</i>	<i>19</i>
<i>Rear</i>	<i>20</i>
PCMCIA SLOT	22
SD SLOT	23

SPARE BATTERY	23
WIRELESS LAN (LOCAL AREA NETWORK)	23
GSM/GPRS (GENERAL PACKET RADIO SERVICE), PPC VERSION ONLY.....	24
BLUETOOTH.....	24
GPS (GLOBAL POSITIONING SYSTEM)	24
BASIC OPERATION.....	25
<i>WINCE VERSION.....</i>	25
START PROGRAMS	25
CALIBRATE TOUCH SCREEN	25
SETTING POWER	25
ADJUST VOLUME	26
SET YOUR OWN BUTTON FUNCTIONS.....	26
BACKUP DATA.....	27
DATA SYNC	28
GPS (OPTIONAL).....	28
POCKET PC VERSION	28
GET HELP	29
CALIBRATE TOUCH SCREEN	29

ADJUST VOLUME	29
SET YOUR OWN BUTTON FUNCTIONS	29
TODAY SCREEN.....	29
FIND A FILE.....	30
REMOVE PROGRAMS	30
MANAGE CERTIFICATES.....	30
INPUT	31
MENUS.....	31
OWNER INFORMATION	31
PASSWORD.....	31
SOUNDS & NOTIFICATIONS	31
CLOCK	32
MEMORY.....	32
POWER	32
WIRELESS LAN FUNCTION	32
POCKET PC VERSION.....	33
WINDOWS CE.NET 4.2.....	42
GPRS SETTING	45

BLUETOOTH WIRELESS TRANSMISSION	49
POCKET PC VERSION	49
BLUETOOTH CONNECTION SETTING	49
<i>Pair</i>	51
<i>Serial Port</i>	53
WINCE VERSION	56
SPECIFICATIONS	59
CPU.....	59
MEMORY	59
DISPLAY	59
TOUCH SCREEN	59
I/O PORTS	60
SYSTEM UNIT DIMENSIONS AND WEIGHT	60
AC ADAPTER.....	60
BATTERY	61
MATERIALS AND RECYCLING	62
ENVIRONMENTAL RATINGS	63

MAINTENANCE / SERVICE	64
CLEANING.....	64
TROUBLESHOOTING	64
RMA SERVICE	65

GETTING STARTED

Unpacking

The following components come with your handheld computer.
If anything is missing or damaged please notify the dealer immediately.



1. Handheld computer unit

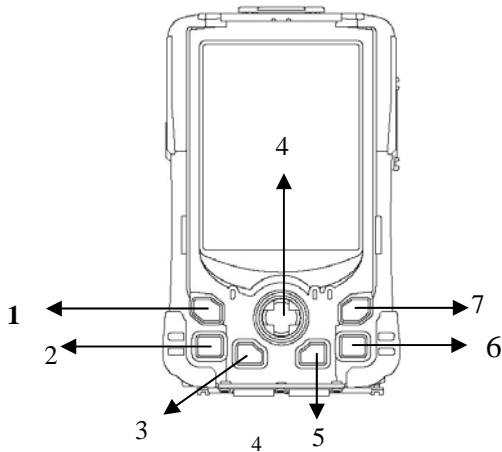
2. AC adapter
3. AC power cord
4. User's guide
5. Microsoft Companion CD(PPC version only)
6. Data sync cable (USB)
7. Spare stylus

Quick Check



- Attach the AC adapter to AC outlet. The adapter LED indicates the power is ready.
- Install the battery and then plug in the adapter to handheld computer. Charge LED will light up till the battery is full. Charging time will be about 4 hours.
For first time use, please charge for more than 8 hours.
- Press the power button momentarily to turn on this device.
- Follow up the instruction on screen to finish the basic setting.
- Press the power button for > 1 second to turn LCD backlight OFF or ON
- Press power button momentarily to turn OFF computer.

Controls, Indicators, and Ports

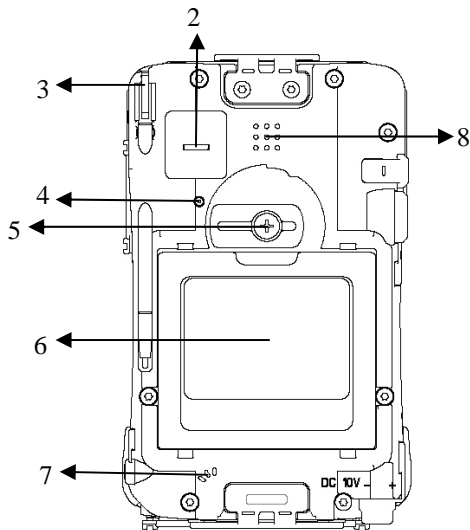
Front:



1. **Wireless ON/OFF** (Flight or button 3)
Turn ON/OFF the wireless device (**PPC version only**)
(Wireless device WLAN, GPRS, Bluetooth, etc. are optional) Please turn it OFF at locations with wireless control (hospital, onboard airplane, etc.)
2. **Button 5 (User programmable)**(**Dial button in PPC Phone edition**)
3. **Button 2 (User programmable)**
4. **Cursor Control**
[Left], [Right], [Up], [Down] 4 directions
[Enter] at the center
5. **Button 1 (User programmable)**
6. **Button 4 (User programmable)** (**Hang up button in PPC Phone edition**)
7. **Power Button**
Press momentarily turns the power ON or OFF.
Press > 1 second turns LCD backlight ON or OFF
(actually power OFF is “suspend” only, the battery is still backing up memory data)
8. ① **Power indicator**

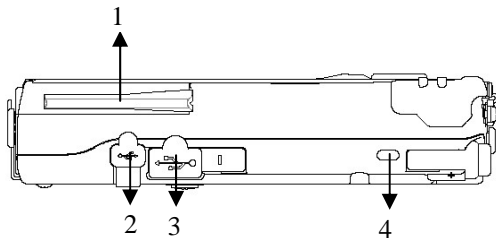
9.  **Battery charge indicator**
10.  **Wireless indicator**

Rear:



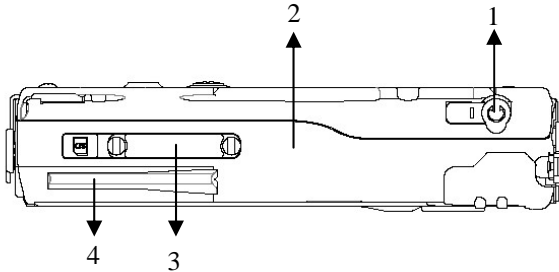
1. Speaker (under hand strap)
2. Master switch (**Don't remove the label, otherwise warranty will expire**)
Turn OFF all power including backup battery.
All data in RAM will be lost when turned OFF.
The switch is for troubleshooting or emergency only.
3. Stylus
4. Reset Button
Soft reset: Press the reset button to warm-boot. After reset the data stored in DRAM remains intact.
Hard reset: Press the reset button and power button simultaneously.
Hard reset clears all data, all settings, then cold-boot. After reset need to calibrate touch screen, do set up, etc. again, but RAM data can not be recovered.
5. Battery knob
6. Battery
7. Microphone

Left:



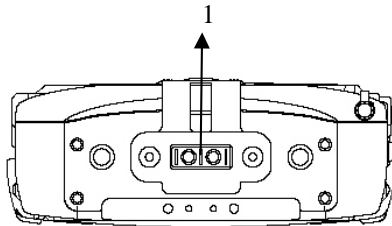
1. Antenna (optional)
Wireless device antenna
2. USB client port
Data sync with the computer.
3. USB Host port
For Keyboard, mouse, USB Flash storage.
4. Kensington lock slot

Right:



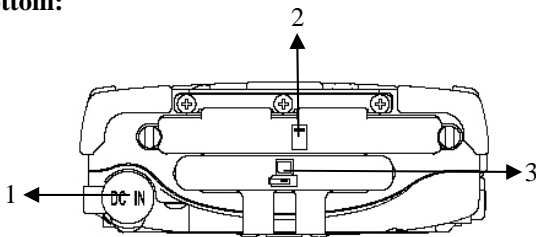
1. Microphone/Earphone jack
2. Infrared port (IR, optional)
3. SD I/O slot (Secured Digital card and device)
4. 2nd antenna (optional)

Top:



1. Serial port
(serial port may be not be used in some configurations.)

Bottom:



1. DC jack
2. PCMCIA slot
One PCMCIA type II slot
CF (Compact Flash card) will be available by PCMCIA-to-CF adapter
3. Cradle docking connector
Connection to cradle

Operating Environment and Ruggedness

A clean and moisture-free environment is preferred.

If it is necessary to work in a hostile environment, please make sure all ports are well protected from dust, moisture, or water. Proper isolation from extreme hazardous exposure is recommended.

The computer is designed with rugged features of vibration, shock, dust, and rain/water protection. However, it is still necessary to provide appropriate protection while exposing to harsh environments.

All connectors will decay or corrode if exposed to water or moisture. Corrosion is accelerated if the power is ON. Please take proper water-resistant measures for cable connections.

The DC jack is sealed type which may be operated with water splashing while DC power cord attached. All other port caps should be in place when no cable is attached.

Regularly maintain the computer by cleaning dust, water, etc. will help keeping it in optimal condition.

Warning: There is no isolated compartment in SD slot, PCMCIA slot, and docking. These ports must be tightly sealed while working with dust/water.

COMPONENTS AND FUNCTIONS

AC adapter

When using the AC adapter:

- Use a properly grounded AC outlet.
- Use one AC outlet exclusively for the computer. Having other appliances on the same line may cause interference.
- Use a power strip with built-in surge protection.

The AC adapter automatically detects the AC line voltage (110V or 220V) and adjusts accordingly.

Battery

The computer will automatically switch to battery power when the external power source (AC adapter) is disconnected.

Battery Power Saving Tips

- Turn OFF the LCD backlight when it is visible with external light
- Lower the intensity of the backlight

- Shut down the computer when not to use for a longer time

Battery Low

When the battery is nearly exhausted, the computer prompts a window warning it. Once the Battery Low warning occurs, please do either or all of the following:

1. Save and close the files you are currently working on
2. Plug in the AC adapter to recharge the battery
3. Swap a charged battery

Charge Battery

Plug in AC adapter will charge the battery automatically. If the battery is already full, the system will stop charge automatically.

Dock to optional cradle + adapter will charge battery, too. Cradle has a battery slot to charge another battery solely.

Swap Battery

To swap the battery:

1. Turn power OFF

2. Turn the battery knob counterclockwise to loose the battery
3. Remove battery from compartment
4. Insert a new battery
5. Press the battery down and turn battery knob clockwise to lock it
6. Press power button to turn ON the computer



*Note: During battery swap the memory data is sustained by a small backup battery.
Please swap battery within 20 minute to avoid data loss.*

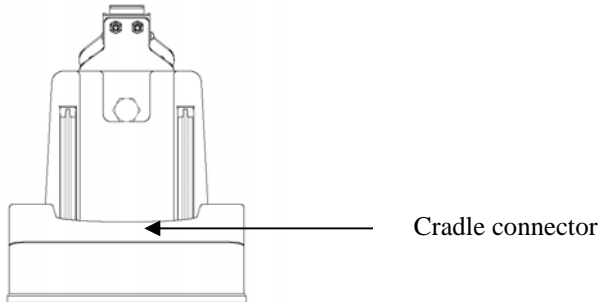
Optional Devices

Cradle (optional)

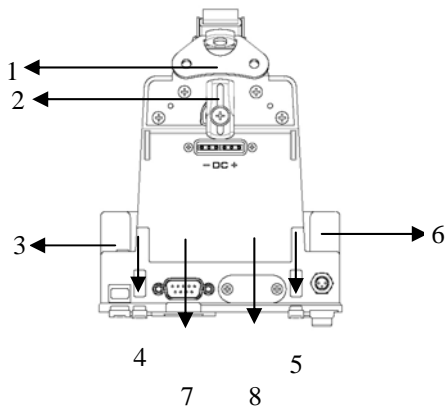
Cradle is the device for docking, port extension, and battery charging. AC adapter may attach directly to cradle and charges the computer battery as well as spare battery.

There is a battery slot on the back of cradle to mount spare battery.

Front:



Rear



1. Battery Lock
2. Spare battery charger
3. USB Client
4. USB Host
5. USB Host
6. DC IN
7. COM port
8. Optional COM port

Mount the cradle:

1. Computer may dock either power is ON or OFF (recommend OFF)
2. Open the rubber cap on the docking connector
3. Align the computer with cradle docking connector
4. Firmly push the computer down to engage the docking connector
5. Turn rotary latch to fix the computer

Remove from the cradle:

1. Turn loose the rotary latch to release computer
2. Pull away the computer either power is ON or OFF

Mount spare battery: (spare battery is optional)

Perform the same procedure as mounting primary battery on computer. Cradle will charge computer and spare battery simultaneously.

PCMCIA Slot

The computer accepts one type-II PCMCIA card. Insert the card firmly into the slot and fix the rubber cover for water/dust protection.

To remove the card, push the eject button to pop out the card. The eject button can hide into the compartment by pushing it inward gently.

May need to load PCMCIA card driver to enable the function.

Note: If the computer is working with dust, moisture, or water, to be sure to fix the PCMCIA rubber cap tightly with screws.

SD Slot

The computer accepts one SD card (Secured Digital Card).

Insert the card firmly into the slot and fix the rubber cover for water/dust protection.

To remove the card, push the eject button to release it.

Note: If the computer is working with dust, moisture, or water, be sure to fix the SD rubber cap tightly with screws.

Spare Battery

It's the same size and capacity as the primary battery.

Wireless LAN (Local Area Network)

IEEE 802.11b wireless LAN module

GSM/GPRS

General Packet Radio Service, **PPC version only**

Wireless voice and data communication

Bluetooth

Short-range wireless data communication


GPS (**Global Positioning System**)

Positioning your location by GPS satellite signals

BASIC OPERATION

WinCE version

Start Programs

( = Start)

Tap **Start** → **Programs** → (desired programs)

Or tap **Start** → **Windows Explorer** → (desired programs)

Calibrate Touch Screen

Tap **Start** → **Settings** → **Control Panel** → **Stylus** to calibrate.

Use pen to touch the center of mark ”+” and repeat the action when the mark ”+” moves. Tap the screen to confirm when finished.

Setting Power

Tap **Start** → **Settings** → **Control Panel** → **Power**, set the length of idle time for computer to shut down automatically.

Setting LCD

Adjust backlight brightness:

Tap on **Start** → **Settings** → **Control Panel** → **System Console** → **Backlight Level**, adjust the brightness level as desired.

Setting backlight timeout:

In the same window adjust the timeout period as desired.

Timeout is the idle time that the LCD backlight would turn OFF automatically.

Adjust Volume

Tap **Start** → **Settings** → **Control Panel** → **Volume & Sounds**, adjust the volume level as desired.

Set Your Own Button Functions

The lower four buttons are user-definable.

Tap **Start** → **Settings** → **Control Panel** → **System Console** → **Buttons**

Define the button functions as you want from the selection list.

Other buttons are not user-programmable.

Backup Data

There are two types memory on the computer: Temporary memory RAM (Random Access Memory) and permanent memory ROM (Read Only Memory).

Most data of ongoing program are stored in RAM. It would stay intact when power turns OFF. (Actually pressing power button OFF/ON is “suspend/resume” only. Part of the computer is still running, power supply to memory is always ON.)

However, data or program in RAM will be lost when hardware reset or master switch turns OFF. And if primary battery been removed for too long time (for example, swap battery for >20 minutes), there are risks to lose RAM data as back up battery may run exhausted. Long time storage will drain primary and backup battery to exhaust thus unable to keep memory data.

To avoid data loss you may move data into ROM or memory card as follows:

Tap and hold the file to pop up the small menu. Tap **Copy** then browse to **Flash Disk** (ROM) or memory card folder. Tap and hold to pop up the small menu, tap **Paste**.

Flask Disk folder:

Tap **Start** → **Programs** → **Windows Explorer** → **Flash Disk**

Data Sync

You may transmit/receive data between this handheld computer and other computers via data sync.

Install Microsoft ActiveSync 7.0 or above on host computer.

Connect handheld computer and host computer with the USB cable.

Follow the prompt to execute data sync.

Perform **Copy, Paste, Cut, Delete**, etc. same as PC.

Note: ActiveSync run on Windows CE prompts “Failed to Set Up Partnership” because it’s designed for Pocket PC only. However, it still works despite the message

GPS (optional)

Tap Start → Program → Windows Explorer → (Navigator) to start GPS.

Remark: Install navigator and map is necessary for this function. No default navigator.

Pocket PC version

Get Help


Tap **Start** → **Help**

Get the needed information from the list.

Calibrate Touch Screen

Tap **Start** → **Settings** → **System** → **Screen** → **Align Screen** to calibrate.

Adjust Volume

Tap speaker icon  on the top bar and adjust the volume level as desired.

Set Your Own Button Functions

Tap **Start** → **Settings** → **Personal** → **Buttons**

Define the button functions from the selection list

Today Screen

The today screen displays information of today's appointments and status icons, etc.

Tap the information listed on today screen to execute the associated program. Tap

Start → **Today** to enter Today screen.

Find a File

Tap **Start** → **Find**

In **Find**, enter the file name, word, or other information you want to search for, If you have looked for this item before, tap the **Find** arrow and select the item from the list.

In **Type**, select a data type to help narrow your search. Tap **Go**, My document folder and subfolder are searched in the results list.

Remove Programs

Tap **Start** → **Settings** → **System** → **Remove Programs** and follow the prompts to delete.

Manage Certificates

Tap **Start** → **Settings** → **System** → **Certificates**

Input your certificates. To delete a certificate, tap and hold it in the list, and then tap **Delete**.

Input

Tap **Start** → **Settings** → **Personal** → **Input**

Select the input method and option you want.

Menus

Tap **Start** → **Settings** → **Personal** → **Menus** and select the items you want to appear on Start Menu.

Owner Information

Tap **Start** → **Settings** → **Personal** → **Owner Information** and follow the descriptions. On the identification tab, enter your personal information. Select “**Show information when device is turn on**” your information will be displayed at power ON.

Password

Tap **Start** → **Settings** → **Personal** → **Password** and follow the descriptions.

Sounds & Notifications

Tap **Start** → **Settings** → **Personal** → **Sound & Notification** and set your favorite notifications.

Clock

Tap **Start** → **Settings** → **System** → **Clock**.

Memory

Tap **Start** → **Settings** → **System** → **Memory** and follow the descriptions.

The main tab displays the amount of memory the system has allocated to file and data storage versus the available memory.

The storage card tab displays how much memory is available on a storage card that is inserted in your device.

The running programs tab displays the list of the currently active programs. You can stop a program by selecting it in the list and tapping stop.

Power

Tap **Start** → **Settings** → **System** → **Power**

The Battery tab displays the amount of battery power remaining.

Wireless LAN function

Pocket PC version

1. Turn on the Wireless signals.
2. Tap Start→Settings→ System→Power.
3. Select Wireless→ “Wireless signal on” → “GlobespanVirata PRISM...”
4. Wireless function has been enabled. Refer to (Fig PPC-1)



Fig PPC-1

5. Access points/ad-hoc links are detected automatically.
6. Select the connection and tap “Connect”, (note: If the connection type is not connected to Internet directly (via proxy...), it’s necessary to choose “Work” option and set the proxy later.) Refer to (Fig PPC-2).
7. If the connection needs network key, the screen will promptly pop up a Network key input.

Just type a correct network keys and then tap “Connect”. Refer to (Fig PPC-3)

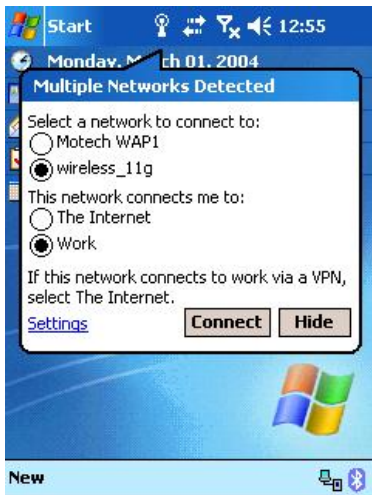


Fig PPC-2



Fig PPC-3

8. Manual connection with Access point or Ad-hoc if they're not detected automatically.
9. Tap Start→Settings, tap Connections→Network card, all discoverable access point/ad-hoc will be listed.
10. Tap the connection in the list. System will enter the “Configure wireless network” page.
11. In the “General” page (Fig. PPC-4), select the “connect to” option for this connection (The Internet or Work, select Work if internet access will via a local network for this connection, for example: proxy).
12. In the “Network Key” page (Fig. PPC-5), input the Network Key if password is needed for an encryption connection. (The option “The key is provided automatically” should be disabled).
13. Tap and hold the selected connection.
14. Tap “Connect”, then the connection will be established and the icon on title bar will be changed as Fig. PPC-6

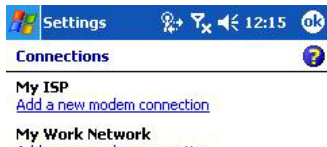


Fig PPC-4



Fig PPC-5

15. Set up proxy server address. (If the connection is via proxy server)
16. Tap Start→Settings→Connections→ “Edit my proxy server” (Fig PPC-7)
17. Input the proxy IP address and its port number (Fig.PPC-8, PPC-9).
18. Open Internet Explorer, type the URL in the address bar, then the web page will show up.



39



Fig PPC-7

Fig PPC-8

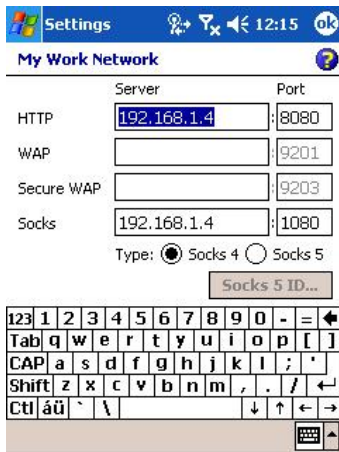



Fig PPC-9

Windows CE.Net 4.2

1. Click  icon (located in the bottom bar), system will pop up a setting dialog as (Fig. CE-1). It will include all discoverable access point/ad-hoc

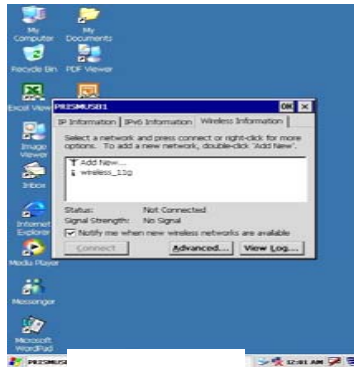
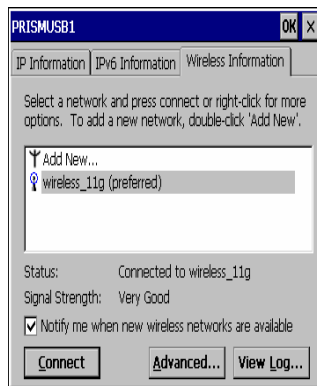
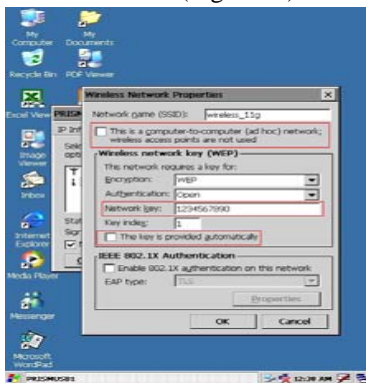


Fig. CE-1

2. Establish a connection with an access point.
 - 2.1 Tap the access point/Ad-Hoc link name in the list.
 - 2.2 Tap “Connect” button, then the “Wireless Network Properties” dialog will pop up (Fig. CE-2).
 - 2.3 Tap “OK” button after setting done, then the connection will be established (Fig.CE-3).



Note:

1. Enter the Network Key if password is needed for an encryption connection. (The option “The key is provided automatically” should be disabled).
2. If the connection type is Ad-Hoc, the “This is a Computer-to-Computer (ad hoc) network” option should be enabled.
3. Open Pocket Internet Explorer, tap tools->Options, the Internet setting dialog will pop up. Tap “Connection” page to enter the proxy address and its port if the internet connection via a local proxy server.



4. Enter the URL address in the browser, then tap enter button in Input panel, the web page will show up.

GPRS Setting

1. Turn on GSM wireless signal, you should be able to see the antenna icon and 'G' icon on title bar

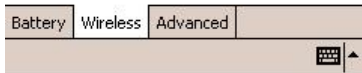
2. Tap Start->Settings->Connections, tap Connection, tap "Add a new modem connection" under My ISP section, then select modem type to "Cellular Line(GPRS)", tap Next, then enter the Access Point Name(APN) (It is most important to enter this name, and the APN is different for each ISP provider). tap Next, enter user Name, Password, even domain name if needed, then tap Finish.



Power

- Wireless signals off (Flight mode)
- Wireless signals on

<input type="checkbox"/> Bluetooth
<input checked="" type="checkbox"/> Phone
<input type="checkbox"/> GlobespanVirata PRISM ...



Basic Operation

Settings 12:15

Connections

My ISP
[Add a new modem connection](#)

My Work Network
[Add a new modem connection](#)
[Add a new VPN server connection](#)
[Set up my proxy server](#)

My Connection

Access point name:
emome

Cancel Back Next

123	1	2	3	4	5	6	7	8	9	0	- =	↵
Tab	q	w	e	r	t	y	u	i	o	p	[]	
CAP	a	s	d	f	g	h	j	k	l	;	'	
Shift	z	x	c	v	b	n	m	,	.	/	↵	
Ctl	â	ü	` \						↓	↑	←	→

Tasks Advanced

The screenshot shows a Windows Settings dialog box titled "Settings" with a blue header bar. On the right side of the header, there are icons for network status, signal strength, and volume, along with the time "12:16". Below the header, the title "My Connection" is displayed in blue text next to a question mark icon. The main area contains three input fields: "User name:", "Password:", and "Domain:*". Below these fields is a note: "* If provided by ISP or network administrator." At the bottom of the dialog, there are four buttons: "Advanced..." (light gray), "Cancel" (light gray), "Back" (light gray), and "Finish" (black with white text). Below the buttons is a virtual keyboard with a grid of keys including numbers, letters, symbols, and navigation keys. A small keyboard icon is visible in the bottom right corner of the keyboard area.

Settings 12:16

My Connection ?

User name:

Password:

Domain:*

* If provided by ISP or network administrator.

Advanced...

Cancel Back **Finish**

123	1	2	3	4	5	6	7	8	9	0	-	=	←
Tab	q	w	e	r	t	y	u	i	o	p	[]	
CAP	a	s	d	f	g	h	j	k	l	;	'		
Shift	z	x	c	v	b	n	m	,	.	/	←	↵	
Ctl	á	ü	`	\					↓	↑	←	→	

3. Open Internet Explorer, enter a URL then browse, the GPRS will connect automatically, and the status will become Connected.

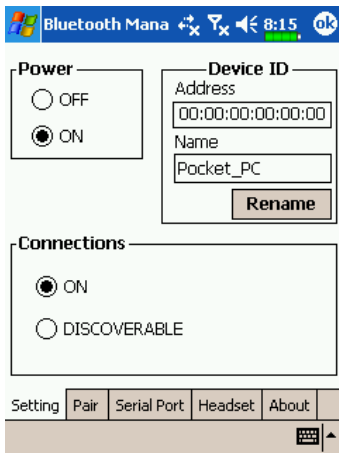
Bluetooth Wireless Transmission


Bluetooth is a short-distance wireless communication technology with an effective range under 10 meters (30 feet). When you turn on the power for Bluetooth, the indicator flashes blue.

Pocket PC version

Bluetooth Connection Setting

Before you use the Bluetooth function, turn on its power.



Tap the  icon on the lower right corner of the Today screen to enter the **Bluetooth Manager** Setting screen.

4. Tap **Bluetooth Manager**, the **Setting** tab

Power

① Tap **ON** to turn on Bluetooth power.

② Tap **OFF** to turn off Bluetooth power.

Make sure that you turn off the power when you need to save power or if you are in locations such as an airplane or hospital that ban the use of wireless devices.

Connections (Bluetooth connection mode)

① ON (connect to other devices): The Bluetooth connection is on. Your Pocket PC can transmit data to other devices but other devices cannot detect your Pocket PC.

② DISCOVERABLE (allow other devices to connect): The Bluetooth connection is on. Within an effective range of 10 meters (30 feet), all devices supporting Bluetooth can detect your Pocket PC and data transmission is performed with confirmation from the other party.

Device ID

① Address: This is the unique address of your Pocket PC.

② Name: Tap **Rename** to change the name. Other devices supporting Bluetooth can identify your Pocket PC by this name.

Pair



5. Tap **Bluetooth Manager**, the **Pair** tab **Search for New Devices**

Search for all devices supporting Bluetooth such as personal computers, Bluetooth headsets, Pocket PCs, etc.

Tap **Search New Device** to enter the search screen.

Follow the instructions on the screen.

This screen is for reference only. The actual screen displayed on your Pocket PC is the standard display.

Tap the paired devices and then tap **Delete Device** to delete the pair relationship.

Serial Port

If you have Bluetooth GPS software, use the product as instructed and refer to the accompanied documentation and this section to register your Pocket PC as an effective serial port or search for other serial ports.



Tap **Bluetooth Manager**, the **Serial Port** tab

Registered Bluetooth Serial Ports:

Port Name	Role	Server Addr
COM2:	Client	000000000000
COM6:	Server	
BTS0:	Client	000000000000

Register New
Server Port

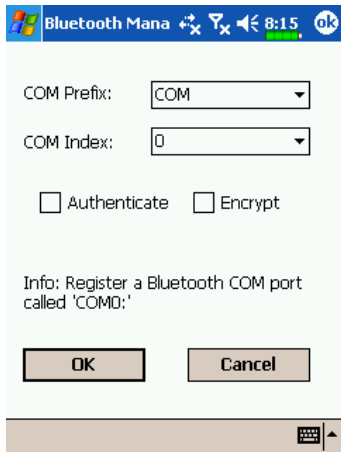
Register New
Client Port

Deregister
Serial Port



Register new serial port

- Tap **Register New Server Port** or **Register New Client Port** to enter the **Setting** screen.



The figure on the left shows the setting screen for registering a new serial port.

❶ If you select COM for the “COM Prefix” field, then the valid options for the “COM Index” field are 0, 7 and 9.

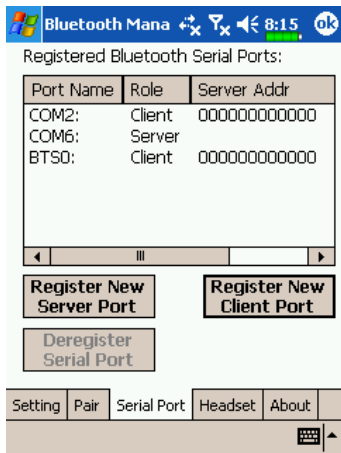
❷ If you select BTS for the “COM Prefix” field, then the valid options for the “COM Index” field are 0 to 9.

❸ If you no longer need to use a registered serial port, tap this serial port under the “Port Name” column to highlight and then tap **Deregister Serial Port** to delete it.

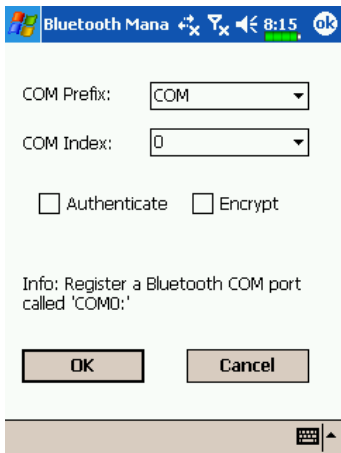
WinCE version

Serial Port

If you have Bluetooth GPS software, use the product as instructed and refer to the accompanied documentation and this section to register your Pocket PC as an effective serial port or search for other serial ports.



1. Tap **Bluetooth Serial Port** on the screen
2. Register new serial port
3. Tap **Register New Server Port** or **Register New Client Port** to enter the **Setting** screen.



The figure on the left shows the setting screen for registering a new serial port.

❶ If you select COM for the “COM Prefix” field, then the valid options for the “COM Index” field are 0, 7 and 9.

❷ If you select BTS for the “COM Prefix” field, then the valid options for the “COM Index” field are 0 to 9.

❸ If you no longer need to use a registered serial port, tap this serial port under the “Port Name” column to highlight and then tap **Deregister Serial Port** to delete it.

SPECIFICATIONS

CPU

Intel XScale PXA255
CPU speed 400MHz

Memory

RAM	128MB
ROM	64MB

Display

Type:	4" Active TFT Transflective Color LCD
Resolution:	480 x 640 pixels (WinCE) or 240 x 320(PPC)
Mode:	VGA (WinCE) or QVGA (PPC)
Color:	256 for VGA or 64K for QVGA
Backlight:	LED

Touch Screen

Type:	Resistive
-------	-----------

Interface: Serial

I/O ports

USB port (USB 1.1 compatible)

USB client port

Serial port

Audio ports (Microphone/Earphone)

PCMCIA slot (type II x 1)

SD slot

System Unit Dimensions and Weight

Width: 90mm (W 3.5")

Depth: 150mm (H 5.9")

Height: 33mm (D 1.3")

Weight: 450g (15 oz.)

AC Adapter

Voltage: AC 90~240 V

Frequency:	50/60 Hz
Output Voltage:	DC 10V 3.5A
Maximum Power:	35 Watts
Dimension:	108mm (4.2" W) x 56mm (2.2" D) x 34mm (1.3" H)
Weight:	270 g (9.5 oz.)

Battery

Type:	Lithium Ion
Capacity:	7.4V 1800mAH
Dimension:	71mm (W 2.8") x 64mm (D 2.5") x 12.3mm (H 0.5")
Weight:	108 g (3.8 oz.)

Materials and Recycling

Materials of the computer are as follows:

Cabinet:	Aluminum alloy ADC-12 or A380, Magnesium alloy AZ91D, UL grade PC+ABS GE C6200 or TN-3813BW
Bracket:	Aluminum 5052 Steel with Nickel plating Stainless Steel S304
Cushion pad:	Nature rubber
PCB:	FR-4, UL 94V0
Battery:	Rechargeable Lithium Ion
Packing:	Carton: Unbleached paper User's Guide: Recycled/Recyclable paper

Please recycle the parts according to local regulations.

Environmental Ratings

Temperature:	DA04I: 0°C ~ 45°C (32°F ~ 113°F) operating -20°C ~ 60°C (-4°F ~ 140°F) storage
	DA04M: -10°C ~ 50°C (-4°F ~ 122°F) operating -40°C ~ 70°C (-40°F ~ 158°F) storage
Humidity:	5 ~ 95% Non-condensing operating 95% maximum storage
Altitude:	0 ~ 12,180 meters (0 ~ 40,000 feet) operating and storage

MAINTENANCE / SERVICE

Cleaning

Always turn OFF the power, unplug the power cord and remove the battery before cleaning.

The exterior of the system and display may be wiped with a clean, soft, and lint-free cloth. If there is difficulty removing dirt, apply non-ammonia, non-alcohol based glass cleaner to the cloth and wipe.

An air gun is recommended for cleaning water and dust. For salty water please wipe with fresh water then blow-dry with an air gun. Close all caps tightly before water cleaning.

Troubleshooting

Should the computer fail to function properly, you may try the following troubleshooting steps: (Please backup your data before troubleshooting)

- Check AC adapter, battery, and the power source.
- Press hardware reset to re-boot the computer.

- Turn OFF the master switch for a while then turn ON and re-boot.
- Remove the software suspected.

RMA Service

If troubleshooting is unsuccessful, please consult your dealer for service

If it is necessary to send in the computer for repairs, please follow the dealer's instructions for RMA# procedure.

Shipping instructions:

1. Use the original shipping container and packing materials, if possible.
2. If the original packing materials are not available, wrap the equipment with soft material (e.g., PU/ PE form) then put the wrapped equipment into a hard cardboard shipping box.
3. Include a sheet with the following information: (Note: please keep a copy for your record)
 - Name
 - Address
 - Unit serial number

- Place and date of purchase or the original invoice number
 - Date of failure
 - A DETAILED description of the problems you have encountered
 - A list of the hardware/software configuration, if applicable.
4. Clearly mark the outside of the shipping box with the RMA number. This will facilitate faster processing and avoid faulty return.
 5. Unless prior arrangements have been made, the customer is responsible for all shipping costs. Unauthorized use of the company's shipping accounts is not permitted.

Recycled /
Recycleable
Printed in
Taiwan

